



## PRODUCT LINE UP

### parSYNC® Series

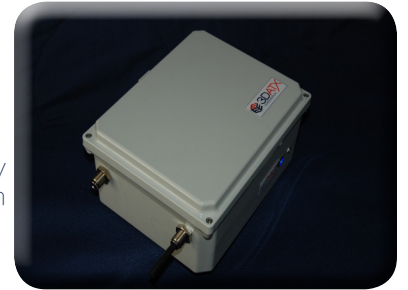
#### Features of the parSYNC®:

- Integrated Portable Emission Measurement System (iPEMS)
- Replaceable PM Sensor Cartridge
- Measures PM/PN

#### Features of parSYNC® PLUS:

- Replaceable PM Sensor Cartridge
- Replaceable GasMOD™ Cartridge
- Measures a NO, NO<sub>2</sub>, & CO<sub>2</sub>

parSYNC® PLUS  
pollutant activity relay  
synchronization



parSYNC®  
particulate  
synchronization

### CA/GE™ System PM/PN calibrator / generator



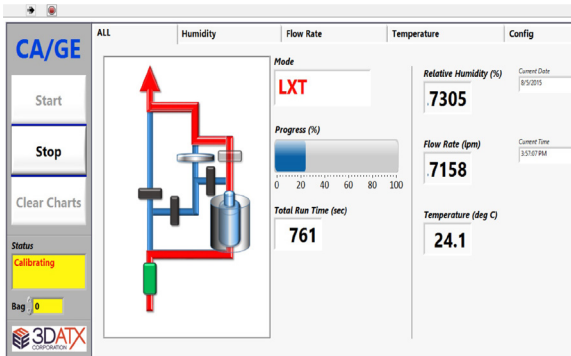
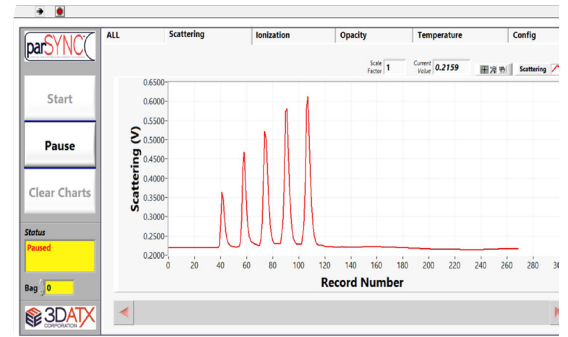
#### Features of the CA/GE™ System:

- Utilizes a combination heater coil atomizer and LiquaXaust™ Tank
- Automated sequencing between Ambient, HEPA, LXT, LXT-HEPA, HEPA, Ambient

1.844.303.3289

## parSYNC® Series

The parSYNC® and parSYNC® PLUS are the first integrated portable emissions measurement systems (iPEMS) for the transportation industry - representing significant cost savings for the fleet manager. Both the parSYNC® and the parSYNC® PLUS utilize a miniaturized multi-chamber and replaceable (patents pending) "Sensor Cartridge" designed to obtain real-time PM/PN performance data from diesel engines either in a dedicated "pass/fail" lane testing configuration or in a field unit PEMS/PAMS approach. In addition, the parSYNC® PLUS adds a NO/NO<sub>2</sub> (NOx)/CO<sub>2</sub> GasMOD™ Sensor Cartridge. On-road testing just got a whole lot easier!



## CA/GE™ System

PM/PN calibrator / generator

Designed to produce a carefully controlled size-disbursed/distributed aerosol combination of non-toxic particles and vapor in the required size range. This provides an extremely accurate calibration method suitable for verification and certification programs. Further, the CA/GE™ System allows for ambient particle testing in areas a normal particle count is not sufficient.

## PARTNERS & CUSTOMERS

North Carolina State University  
Texas Transportation Institute  
Texas A&M  
Oklahoma State University  
UC Riverside / CE-CERT  
University of Leeds

California Air Resources Board  
United States Environmental Agency  
Mustang Advanced Engineering  
InfoWedge  
Innovative Hydrogen Solutions  
Mech & Associates

We make transportation decisions easy

1.844.303.3289

www.3DATX.com  
150 North Airport Drive | Buffalo | NY 14225  
info@3DATX.com